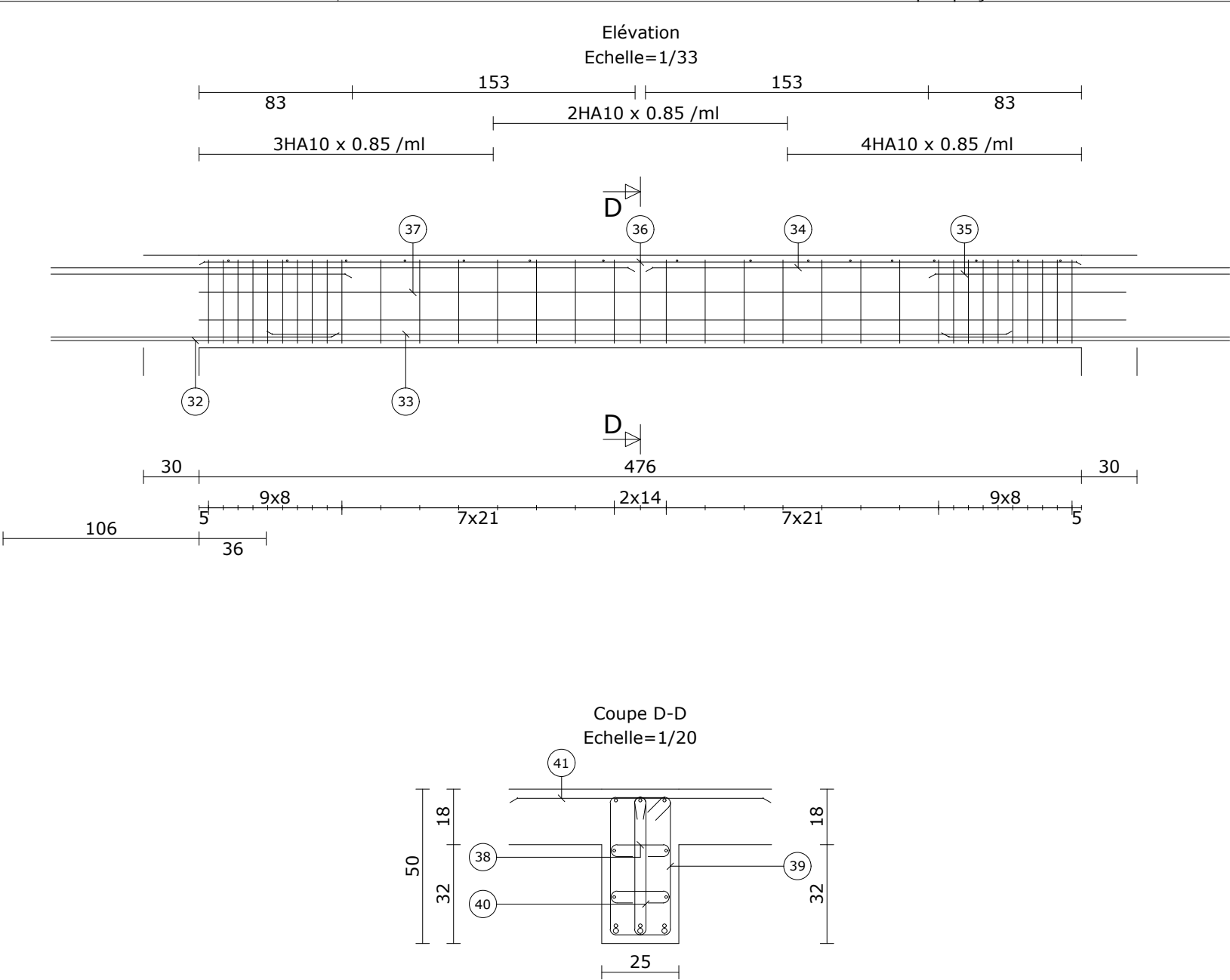


		PEX-04-T	Béton=0.40 m3 Acier=123.3 kg d=304.6 kg/m3 Fi=11.2 mm Cof=4.2 m²	Eb=2.5 cm Eh=2.5 cm El=2.5 cm	4 8
	- Date 27/04/22 - 1 étages -				
	Section : 25 x 50ht				
	Dispositions constructives RPS2011: poutre principale				
	Fc28= 25 MPa Fe= 500 MPa Fissuration peu préjudiciable				



Barre		Lg	Forme
32	3HA16	688	688
33	3HA12	403	403
34	3HA14	500	500
35	3HA14	195	195
36	3HA10	476	476
37	4HA8	500	500
38	70HA8	37	20
39	35HA6	142	20 45
40	35HA6	109	45
41	16HA10	85	85
Barre		Lg/Poids	
HA6		88.0/19.5	
HA8		45.9/18.1	
HA10		27.9/17.2	
HA12		12.1/10.7	
HA14		20.9/25.2	
HA16		20.6/32.6	