

[illegible]

Mod on Toile en aluminium  
Châssis au Noor

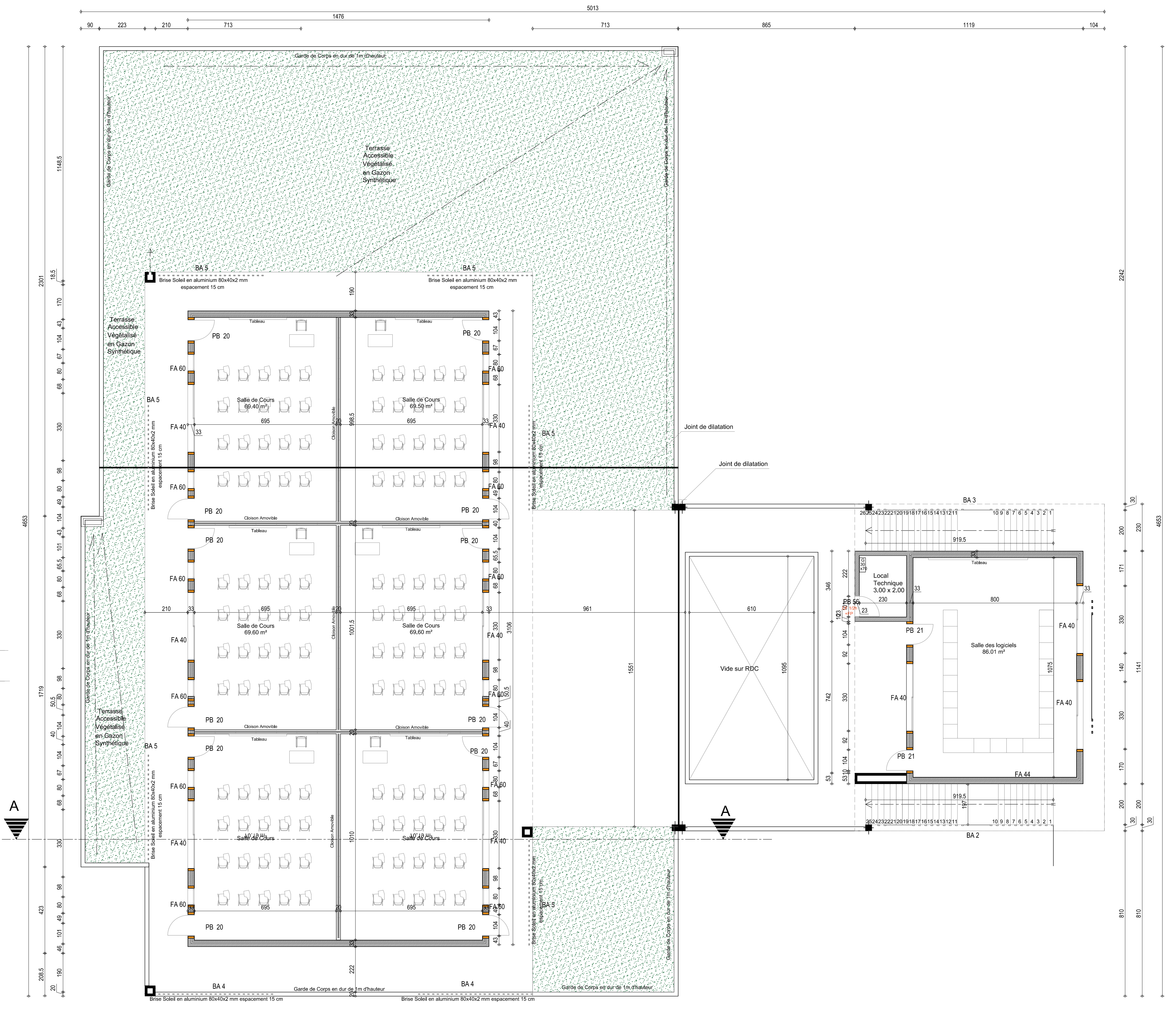
Toile ciment  
Aluminium  
100 x 50 x 2 mm  
esp. 20 cm

Cote Fin Acrotère +5.52

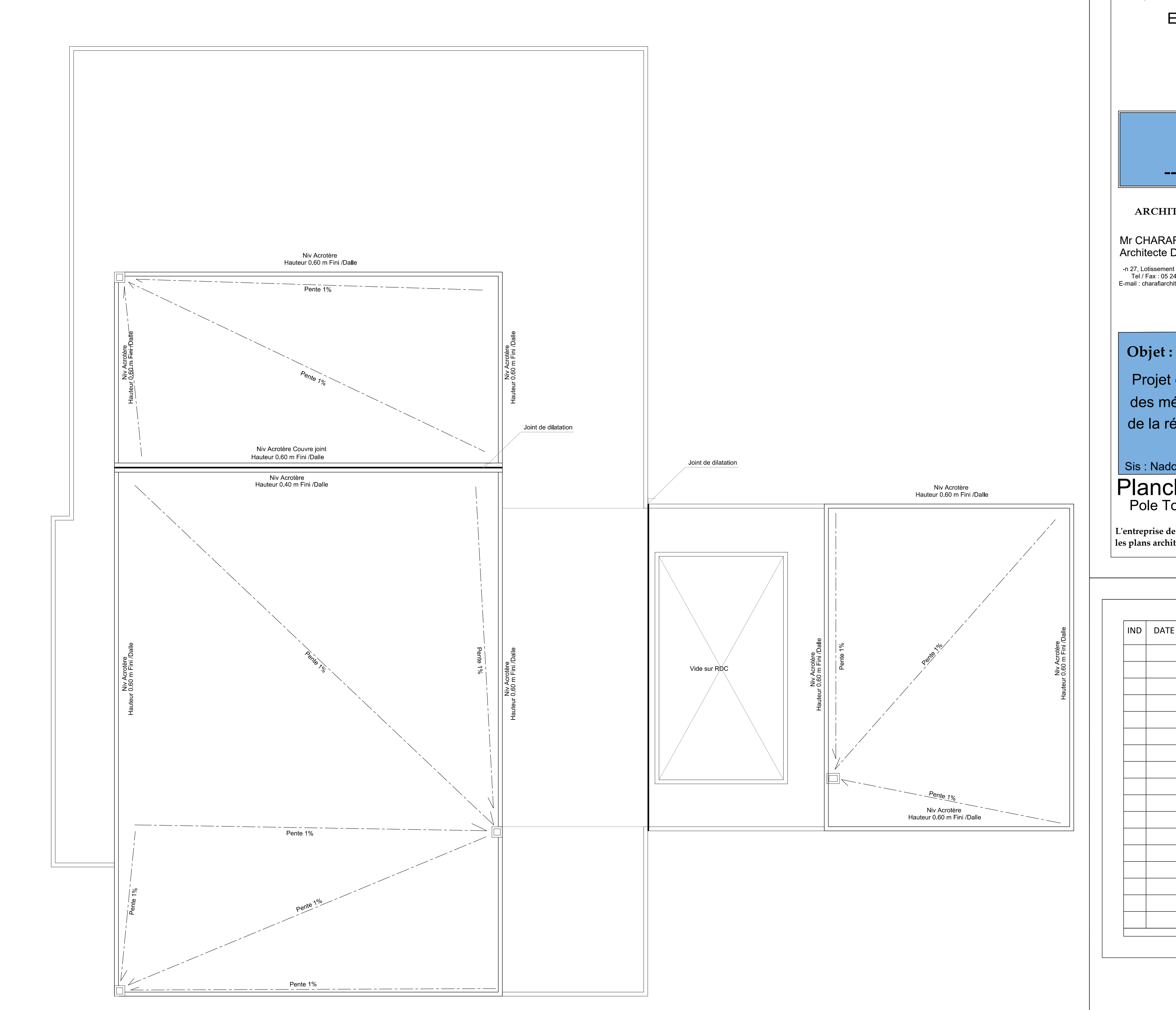
Cote Fin Toiture +8.72

Cote Fin 1er Etage +4.08

Cote Fin RDC +0.00



Technical drawing of a building facade showing a cross-section and elevation. The drawing includes labels for materials like "Tubo cerâm Aluminiu" and "Modul cu Tăie aluminiu", and dimensions for various components.



Maçonnerie en brique  
en creux  
Coulée de béton

Tout en creux  
Aluminium  
100 X 50 X 2 mm  
400 X 20 cm

Cote Fin Acrotère +4.52

Cote Fin Toiture +5.72 .....

Cote Fin 1er Étage +4.45

Cote Fin HSC +5.10

Architectural floor plan of the first floor of the building. The plan shows a central 'Salle de Cours' (Classroom) and a 'Salle de Cours' (Classroom) on the right. Below these are a 'Restaurant' and an 'Office Restaurant'. To the left of the central area are 'W.C.', 'W.C.', 'Sas Sanitaires', and 'Local Technique'. The plan includes various dimensions and labels for doors and windows.